

# Way Wipers

**thodacon**<sup>®</sup>  
Machine Tool Protection



BEST CHOICE for machine tool protection

Thodacon Machine Tool Protection



# Index

---

Company Introduction	3
----------------------	---

---

Thodacon Way Wipers	4
---------------------	---

---

MW A	5
MW B	6
MW C	8
MW CS	9
MW D/DK	10
MW E	11
MW F/G/H	12
MW L/R	13
MW V/K/P	14
MW S/N	15
MW U	16
MW X	18
MW Capilub	19

---

AW	20
----	----

---

SW	22
----	----

---

TW A	25
TW B	26
TW C	28
TW E/R	30
TW K	31
TW M	32
TW N	34
TW G	35
TW H	38

# Company Introduction

## ***thodacon***

Werkzeugmaschinenenschutz GmbH

Albert-Schalper-Str. 25  
83059 Kolbermoor, Germany  
Tel: +49 (0)8031-22205-71

## ***thodacon***

Machine Tool Protection Co., Ltd.

Baojian Industrial Zone, Building 1, Luoshe  
Wuxi 214154, China  
Tel: +86 510 8329 1518



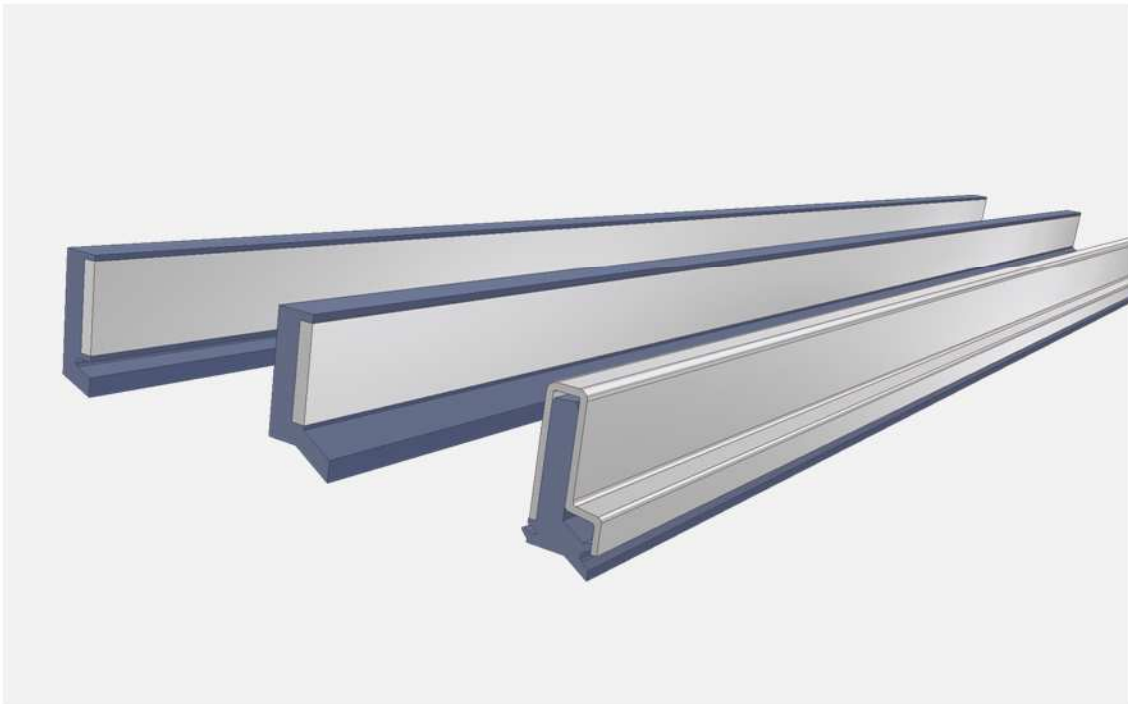
**By using your Way Wipers, you will be able to experience the quality and long duration, brought to you by Thodacon.**

Thodacon as a global player unifies the whole process chain of all its products under one organisation and offers the following advantages:

- Own R&D department ensures a state of the art technology.
- Own Design and customer service.
- Production with a high vertical range of manufacturing for all Thodacon products.
- Located in Europe (Germany) and Asia (China).
- Represented global far.
- Global call off warehouse and own logistics enables deliveries to each global location within 3 – 5 days.
- ISO 9001:2008 certified. \*

\* Plant Asia

# Thodacon Way Wipers



Whether requirements like resistance to abrasion, excellent suitable shapes according to the most complicate guide ways by low coefficient of friction or just the chemical resistance to mineral oil, coolants, and even acids, the range of Thodacon way wipers and sealings will offer you the appropriate answer for your needs.

Our technicians are pleased to submit you an adequate advisory service. As a matter of course we provide CAD exchange of 3-D files and make it easy to implement our parts into your design.

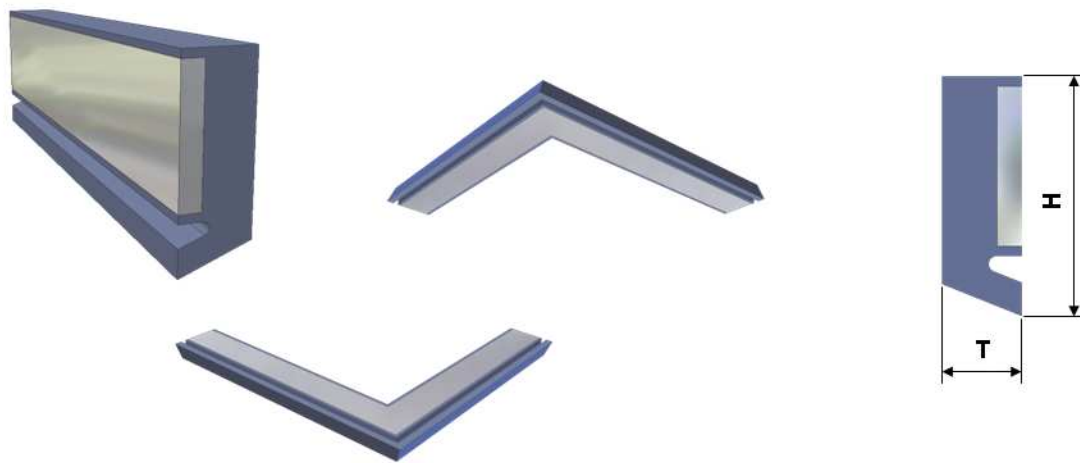
Even most comprehensive developments are carried out in accurate quality in the shortest possible time.

Depending on the solution, the elastomers we choose are special Thodacon compositions of NBR, H-NBR, FPM and PU. Support frames and casings are mostly made of high grade steel or are well protected to corrosion.

The regular elastomer compositions are NBR and FPM with a hardness of 83 A. The standard color is black. Further hardnesses, colors as well as the using of the material H-NBR are available according to the customers' request.

A big range of standard parts in stock is available for prompt delivery.

# MW A

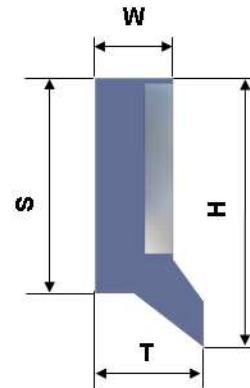
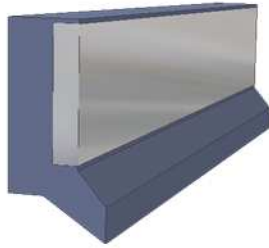


## Technical Information

Type	Order No.	H	T	Length	Elast.
MW A 1	1000168	14	6.5	500	NBR
MW A 2	1000169	14	6.5	500	FPM
MW A 3	1000082	18	6.5	500	NBR
MW A 4	1000083	18	6.5	500	FPM
MW A 5	1000170	25	6.5	500	NBR
MW A 6	1000171	25	6.5	500	FPM
MW A 7	1000172	14	5	500	NBR
MW A 8	1000173	14	5	500	FPM
MW A 9	1000174	18	5	500	NBR
MW A 10	1000175	18	5	500	FPM
MW A 11	1000176	25	5	500	NBR
MW A 12	1000177	25	5	500	FPM

All dimensions in "mm"

# MW B



## Technical Information

Type	Order No.	H	S	W	T	Length	Elast.
MW B 1	1000179	9.5	7.5	2.5	5	560	NBR
MW B 1L	1001104	9.5	7.5	2.5	5	1000	NBR
MW B 2	1000180	9.5	7.5	2.5	5	560	FPM
MW B 2L	1001135	9.5	7.5	2.5	5	1000	FPM
MW B 3	1000181	15	11.5	5	7	560	NBR
MW B 3L	1000993	15	11.5	5	7	1000	NBR
MW B 4	1000182	15	11.5	5	7	560	FPM
MW B 4L	1001146	15	11.5	5	7	1000	FPM
MW B 5	1000104	18	15	5	9	560	NBR
MW B 5L	1001049	18	15	5	9	1000	NBR
MW B 6	1000183	18	15	5	9	560	FPM
MW B 6L	1001147	18	15	5	9	1000	FPM
MW B 7	1000184	21	17.5	5	7	560	NBR
MW B 7L	1001127	21	17.5	5	7	1000	NBR

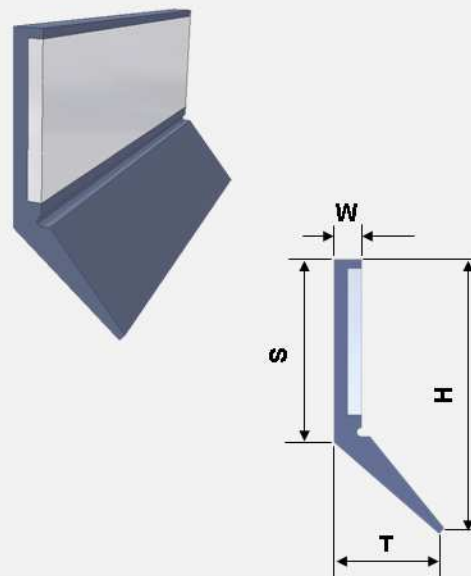
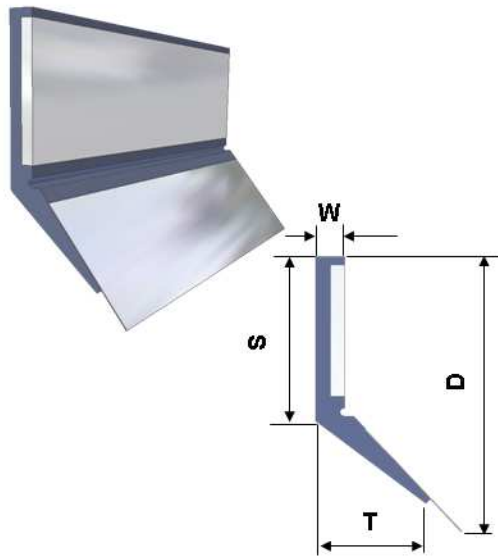
# MW B

## Technical Information

Type	Order No.	H	S	W	T	Length	Elast.
MW B 8	1000185	21	17.5	5	7	560	FPM
MW B 8L	1001148	21	17.5	5	7	1000	FPM
MW B 9	1000186	25	21	6	11	560	NBR
MW B 9L	1001105	25	21	6	11	1000	NBR
MW B 10	1000187	25	21	6	11	560	FPM
MW B 10L	1001149	25	21	6	11	1000	FPM
MW B 11	1000188	26	23	5	7	560	NBR
MW B 11L	1001106	26	23	5	7	1000	NBR
MW B 12	1000189	26	23	5	7	560	FPM
MW B 12L	1001150	26	23	5	7	1000	FPM
MW B 13	1000190	30	27	5	7	560	NBR
MW B 14	1000191	30	27	5	7	560	FPM
MW B 15	1000901	31	28	5	7	560	NBR
MW B 15L	1001107	31	28	5	7	1000	NBR
MW B 16	1000902	31	28	5	7	560	FPM
MW B 16L	1001153	31	28	5	7	1000	FPM
MW B 17	1001289	36	33	5	7	560	NBR
MW B 18	1001290	36	33	5	7	560	FPM
MW B 19	1001291	39	36	5	7	560	NBR
MW B 20	1001292	39	36	5	7	560	FPM

All dimensions in "mm"

# MWC

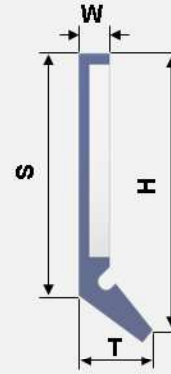
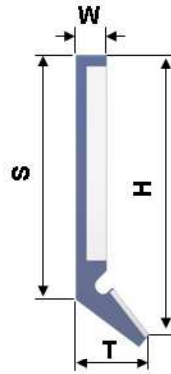


## Technical Information

Type	Order No.	Protection	H	S	W	T	D	Length	Elast.
MW C 1	1000197	Spring steel	25	15.5	3	12	29	800	NBR
MW C 2	1000198	Spring steel	25	15.5	3	12	29	800	FPM
MW C 3	1000199	-	25	15.5	3	12	-	800	NBR
MW C 4	1000200	-	25	15.5	3	12	-	800	FPM
MW C 5	1000113	Spring steel	30	20.5	3	12	34	800	NBR
MW C 5L	1017951	Spring steel	30	20.5	3	12	34	1000	NBR
MW C 6	1000201	Spring steel	30	20.5	3	12	34	800	FPM
MW C 6L	1025030	Spring steel	30	20.5	3	12	34	1000	FPM
MW C 7	1000087	-	30	20.5	3	12	-	800	NBR
MW C 7L	1025031	-	30	20.5	3	12	-	1000	NBR
MW C 8	1000202	-	30	20.5	3	12	-	800	FPM
MW C 8L	1024048	-	30	20.5	3	12	-	1000	FPM
MW C 9	1018620	Spring steel	35	25.5	3	12	39	800	NBR
MW C 10	1025032	Spring steel	35	25.5	3	12	39	800	FPM
MW C 11	1025033	-	35	25.5	3	12	-	800	NBR
MW C 12	1025034	-	35	25.5	3	12	-	800	FPM



# MW CS



## Technical Information

Preload: 3.5 mm

Type	Order No.	Protection	H	S	W	T	Length	Elast.
MW CS 1	1020466	Spring steel	27	22.7	3	7.3	800	NBR
MW CS 2	1020467	Spring steel	27	22.7	3	7.3	800	FPM
MW CS 3	1020468	-	27	22.7	3	7.3	800	NBR
MW CS 4	1020469	-	27	22.7	3	7.3	800	FPM
MW CS 5	1037480	Spring steel	27	22.7	3	7.3	1500	NBR
MW CS 6	1041444	Spring steel	27	22.7	3	7.3	1500	FPM
MW CS 7	1041445	-	27	22.7	3	7.3	1500	NBR
MW CS 8	1041446	-	27	22.7	3	7.3	1500	FPM

All dimensions in "mm"

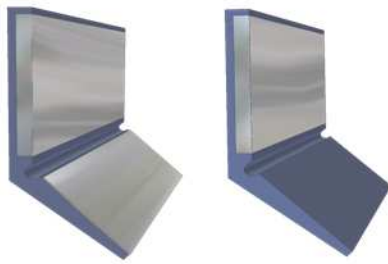
Moulded Wiper Type C, CS and D are the right choice to clean big steel plates with inaccuracies on the surface. The high flexible wiper lip compensates it easily.

A preload up to 4 mm while keeping a constant low friction makes this wiper suitable especially for the internal space of high speed drilling machines.

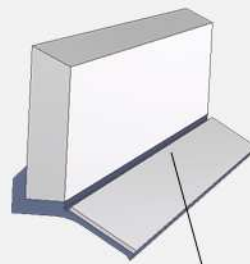
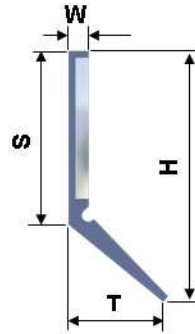
An optional high grade spring steel vulcanised on the rubber will be an excellent protection to hot chips, which are part of the harsh environment into the machines.

# MW D/DK

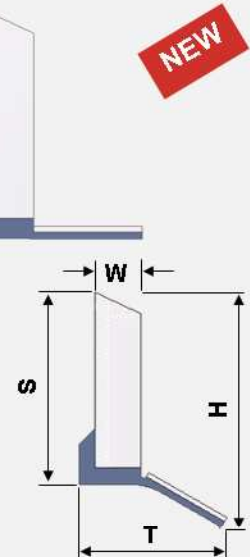
Way Wiper  
MW Series



MW D



MW DK



## Technical Information for MW D

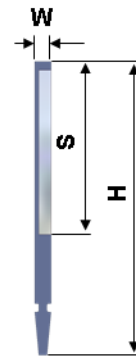
Type	Order No.	Protection	H	S	W	T	Length	Elast.
MW D 1	1000203	Spring steel	39	27	3	15	850	NBR
MW D 2	1000204	Spring steel	39	27	3	15	850	FPM
MW D 3	1000205	-	39	27	3	15	850	NBR
MW D 4	1000206	-	39	27	3	15	850	FPM
MW D 5	1004783	Spring steel	32	20	3	15	850	NBR
MW D 6	1004777	Spring steel	32	20	3	15	850	FPM
MW D 7	1021136	-	32	20	3	15	850	NBR
MW D 8	1021137	-	32	20	3	15	850	FPM
MW D 9	1036148	Spring steel	45	27	3	21.5	1000	NBR
MW D 10	1036149	Spring steel	45	27	3	21.5	1000	FPM
MW D 11	1041448	-	45	27	3	21.5	1000	NBR
MW D 12	1041449	-	45	27	3	21.5	1000	FPM

## Technical Information for MW DK

Preload up to 3mm

Type	Order No.	Protection	H	S	W	T	Casing	Length	Elast.
MW DK 1	1023168	Spring steel	16	13	3.0	10	Alu	1200	NBR
MW DK 2	1028816	Spring steel	16	13	3.0	10	Alu	1200	FPM

All dimensions in "mm"

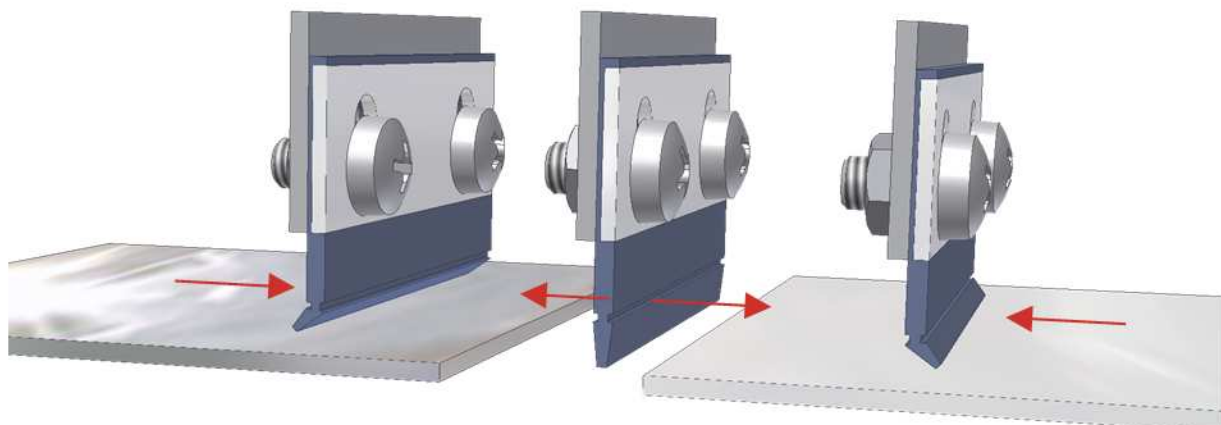


## Technical Information

Swing lip

Type	Order No.	H	W	S	Length	Elast.
MW E 1	1000207	25	2	17.3	600	NBR
MW E 2	1000208	25	2	17.3	600	FPM
MW E 3	1000098	34	2	19.3	600	NBR
MW E 4	1000211	34	2	19.3	600	FPM

All dimensions in "mm"



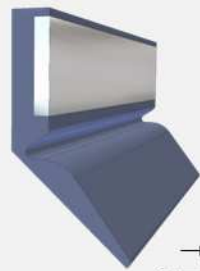
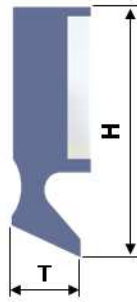
Moulded Wipers Type E are the right choice to clean any guideway with steps or interruptions in the surface.

A preload up to 3 mm while keeping a constant low friction makes this wiper suitable especially to compensate inaccuracies between any cover parts like machine doors.

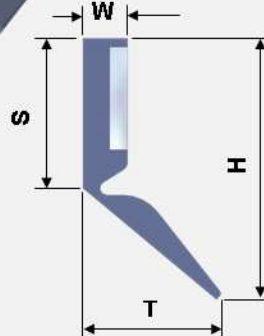
# MW F/G/H



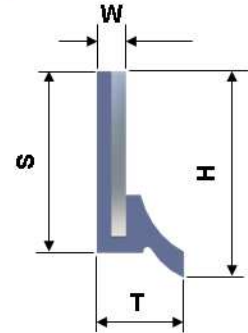
MW F



MW G



MW H



## Technical Information for MW F

Type	Order No.	H	T	Length	Elast.
MW F 1	1000214	22	10.5	1000	NBR
MW F 2	1000215	22	10.5	1000	FPM
MW F 3	1000122	28	10.5	1000	NBR
MW F 4	1000216	28	10.5	1000	FPM
MW F 5	1000217	40	10.5	1000	NBR
MW F 6	1000218	40	10.5	1000	FPM

## Technical Information for MW G

Extremely flexible lip, Preload up to 10 mm

Type	Order No.	H	S	W	T	Length	Elast.
MW G 1	1000133	30	17	5	15.5	500	NBR
MW G 2	1000219	30	17	5	15.5	500	FPM
MW G 3	1000220	40	27	5	15.5	500	NBR
MW G 4	1000221	40	27	5	15.5	500	FPM

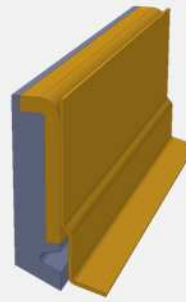
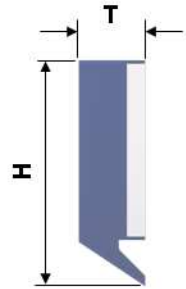
## Technical Information for MW H

Type	Order No.	H	S	W	T	Length	Elast.
MW H 1	1000125	12.5	11	2	6	500	NBR
MW H 2	1000222	12.5	11	2	6	500	FPM

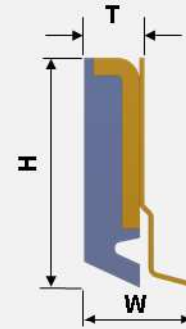
# MW L/R



MW L



MW R



## Technical Information for MW L

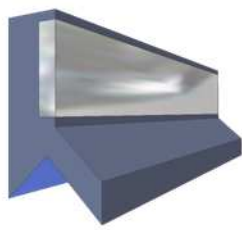
Type	Order No.	H	T	Length	Elast.
MW L 1	1015190	18.5	6.5	1000	NBR
MW L 2	1015191	18.5	6.5	1000	FPM
MW L 3	1015659	22	6.5	1000	NBR
MW L 4	1015660	22	6.5	1000	FPM
MW L 5	1015769	26	6.5	1000	NBR
MW L 6	1015658	26	6.5	1000	FPM

## Technical Information for MW R

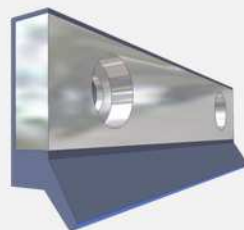
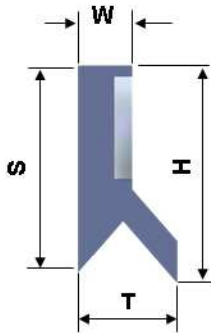
Type	Order No.	H	T	W	Length	Elast.
MW R 1	1015808	18	6.5	12	300	NBR
MW R 2	1015809	18	6.5	12	300	FPM
MW R 3	1005881	25	6.5	12	300	NBR
MW R 4	1015810	25	6.5	12	300	FPM

All dimensions in "mm"

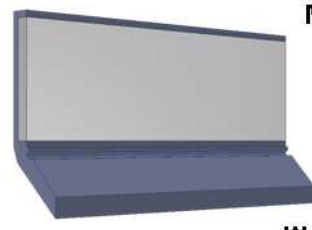
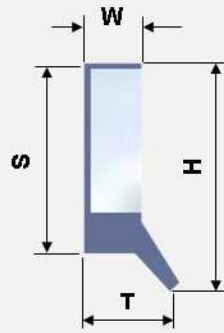
# MW V/K/P



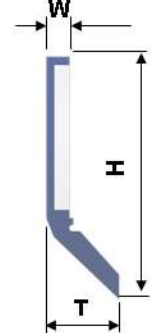
MW V



MW K



MW P



## Technical Information for MW V

Double Sealing

Type	Order No.	H	S	W	T	Length	Elast.
MW V 1	1000905	21	20	6	11	560	NBR
MW V 2	1000906	21	20	6	11	560	FPM
MW V 3	1000912	26	25	6	11	560	NBR
MW V 4	1000913	26	25	6	11	560	FPM
MW V 5	1009702	26	25	6	11	1000	NBR
MW V 6	1015848	26	25	6	11	1000	FPM

## Technical Information for MW K

Aluminium casing, step holes possible

Type	Order No.	H	S	W	T	Length	Elast.
MW K 1	1000607	18	15	4.5	7.5	500	NBR
MW K 2	1000896	18	15	4.5	7.5	500	FPM
MW K 3	1000835	25	22	4.5	7.5	560	NBR
MW K 4	1000914	25	22	4.5	7.5	560	FPM

## Technical Information for MW P

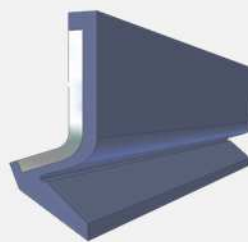
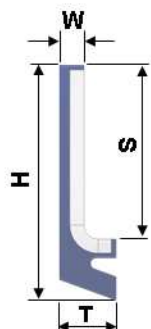
Type	Order No.	H	W	T	Length	Elast.
MW P 1	1010544	30	3.0	9.5	1000	NBR
MW P 2	1015818	30	3.0	9.5	1000	FPM



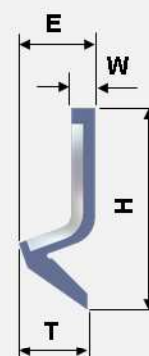
# MW S/N



MW S



MW N



## Technical Information for MW S

Type	Order No.	H	S	W	T	Length	Elast.
MW S 1	1011856	18	11.5	2.6	6.0	300	NBR
MW S 2	1015815	18	11.5	2.6	6.0	300	FPM
MW S 3	1011835	25	18.5	2.6	6.0	300	NBR
MW S 4	1015816	25	18.5	2.6	6.0	300	FPM
MW S 5	1009660	30	23.5	2.6	6.0	300	NBR
MW S 6	1015817	30	23.5	2.6	6.0	300	FPM
MW S 7	1011836	40	33.5	2.6	6.0	300	NBR
MW S 8	1015846	40	33.5	2.6	6.0	300	FPM

## Technical Information for MW N

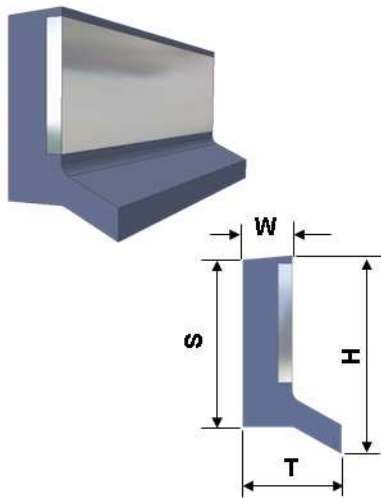
Preload up to 3 mm

Type	Order No.	H	E	W	T	Length	Elast.
MW N 1	1000127	26	10	3	9	500	NBR
MW N 2	1000920	26	10	3	9	500	FPM
MW N 3	1029053	26	10	3	9	1000	NBR
MW N 4	1029295	26	10	3	9	1000	FPM

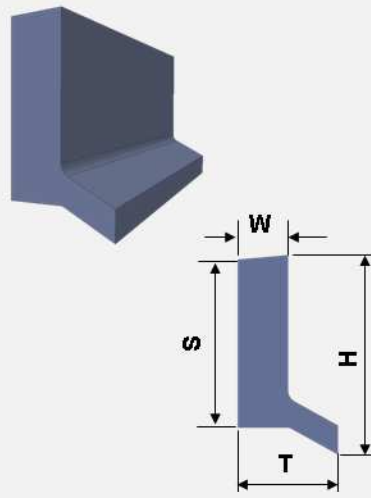
All dimensions in "mm"

# MW U

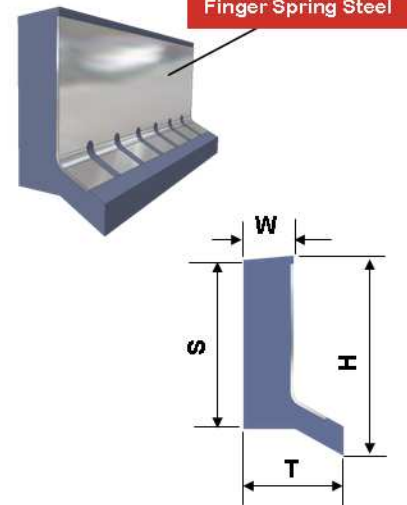
MW U 1 / 2



MW U 3 / 4



MW U 5 / 6



## Technical Information for MW U 1/2

- Classical solution including vulcanised steel casing

Type	Order No.	H	S	W	T	Length	Elast.
MW U 1	1000789	25.4	22	6.35	12.7	560	NBR
MW U 2	1000915	25.4	22	6.35	12.7	560	FPM

## Technical Information for MW U 3/4

- Flexible solution without steel casing

Type	Order No.	H	S	W	T	Length	Elast.
MW U 3	1000620	25.4	22	6.35	12.7	560	NBR
MW U 4	1000916	25.4	22	6.35	12.7	560	FPM

## Technical Information for MW U 5/6

- Flexible solution with vulcanised spring steel protection

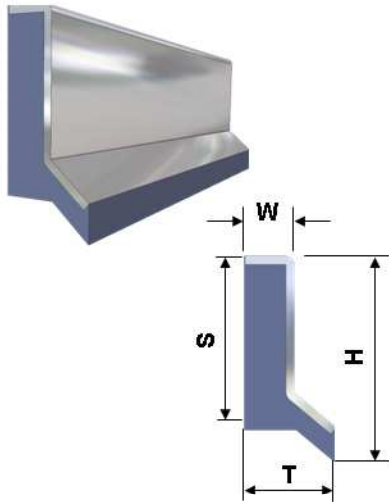
Type	Order No.	H	S	W	T	Length	Elast.
MW U 5	1000621	25.4	22	6.35	12.7	560	NBR
MW U 6	1000917	25.4	22	6.35	12.7	560	FPM

All dimensions in "mm"

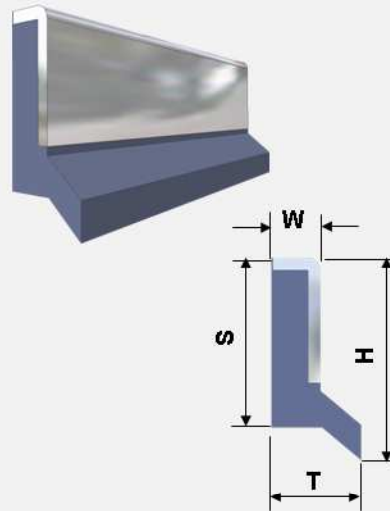


# MW U

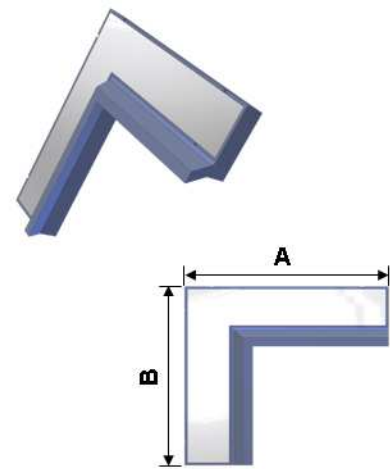
MW U 7 / 8



MW U 9 / 10



MW U 11 / 12



## Technical Information for MW U 7/8

- Flexible solution with vulcanised spring steel protection

Type	Order No.	H	S	W	T	Length	Elast.
MW U 7	1001108	25	21	6	11	560	NBR
MW U 8	1001122	25	21	6	11	560	FPM

## Technical Information for MW U 9/10

- Flexible solution with vulcanised spring steel protection

Type	Order No.	H	S	W	T	Length	Elast.
MW U 9	1001123	25	21	6	11	560	NBR
MW U 10	1001124	25	21	6	11	560	FPM

## Technical Information for MW U 11/12

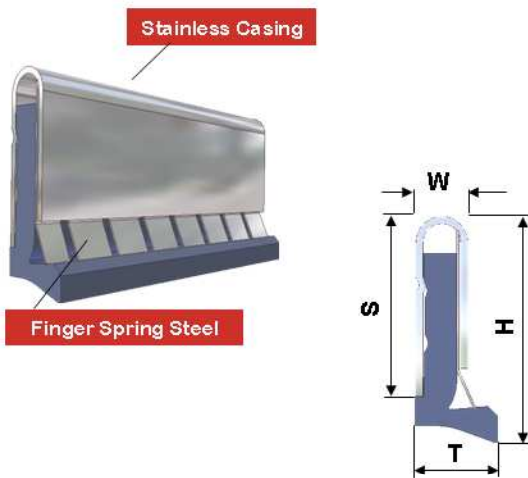
- Right angle wiper

Type	Order No.	H	S	W	T	A	B	Elast.
MW U 11	1005730	25.4	22	6.35	12.7	76.2	76.2	NBR
MW U 12	1021147	25.4	22	6.35	12.7	76.2	76.2	FPM

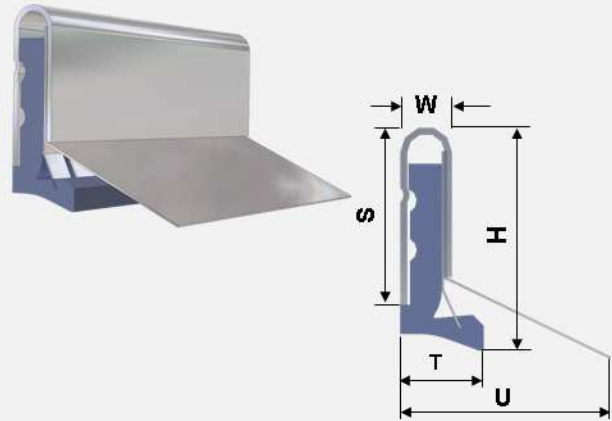
All dimensions in "mm"

# MW X

## MW X 1 / 2



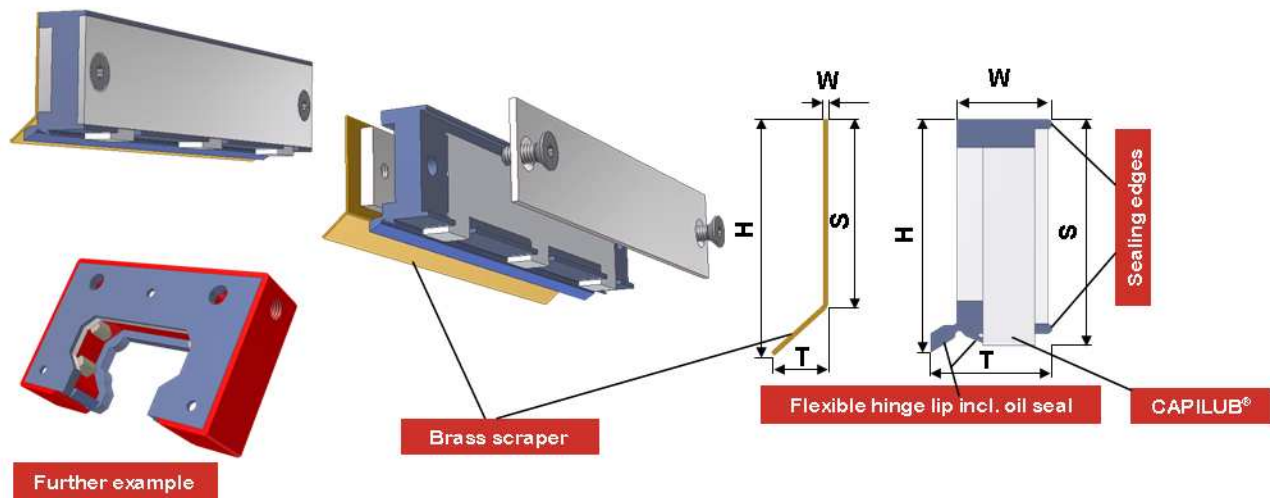
## MW X 3 / 4



### Technical Information MW X

Type	Order No.	H	S	W	T	U	Length	Elast.
MW X 1	1000922	27.5	21.5	6	10	-	500	NBR
MW X 2	1001182	27.5	21.5	6	10	-	500	FPM
MW X 3	1004820	27.5	21.5	6	10	25.2	500	NBR
MW X 4	1004867	27.5	21.5	6	10	25.2	500	FPM

All dimensions in "mm"



## Technical Information

Type	Order No.	H	S	W	T	Length	Material
MW Cab 1	1016559	25	24.3	11	14	560	NBR 83
MW Cab 2	1023612	25	24.3	11	14	560	FPM 83
MW Cab 3	1016563	25	24.3	11	14	560	NBR 90
MW Cab 4	1016564	25	24.3	11	14	560	FPM 90
MW Cab 5	1016464	25	20	0.5	6.0	560	Brass

All dimensions in "mm"

A peripheral, independent lubrication of guide ways has a long tradition. The messenger for current solutions was the well known lubrication felt. Drenched in oil, it was the most reliable lubrication film source for a long time.

Even in the recent past, famous brands have reinstated the old principle.

The Thodacon CAPILUB™ systems set new standards:

Latest technological expertise of science and technology allowed the new development of Thodacon CAPILUB™ (Lubrication by capillary suction time) - multipurpose substance .

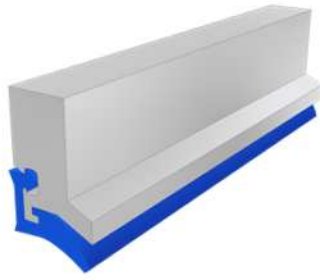
The configuration is very simple:

On an area of a guide way which is sealed by wipers , a suitable and oil soaked CAPILUB™ part is assembled. Depending on the volume of the CAPILUB™ and the circumstances of environment a durability for rolling body systems up to 20.000 kilometer without refilling is possible.

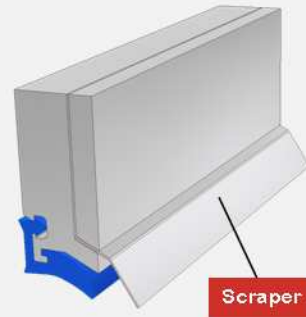
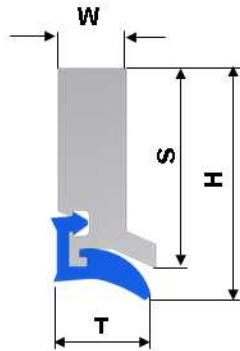
The advantages: Environment friendly, since as less oil will be used as necessary only. No central lubrication system needed. Especially at minimal lubrication or dry cutting, an extensive extension of wipers durability and the whole linear unit.

# AW

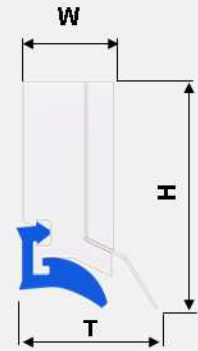
## AW 1.0 / 2.0



Aluminium Casing



Scraper



## Technical Information

Type	Order No.	H	S	W	T	Length	Casing	Elast.
AW 1.0	1005454	18	14.4	7	10	500	Alu	PU 85
AW 1.1	1004409	18	14.4	7	10	1000	Alu	PU 85
AW 2.0	1005457	25	21.4	7	10	500	Alu	PU 85
AW 2.1	1004410	25	21.4	7	10	1000	Alu	PU 85

- Casing and wiper lip available separately

Type	Order No.	Length	Casing	Elast.
AW 1.2	1004436	1000	Alu	-
AW 2.2	1004438	1000	Alu	-
AW 3.0	1004439	endless	-	PU 85 Blue

- AW Wiper with Scraper ( Spring steel )

Type	Order No.	H	W	T	Length	Casing	Elast.
AW 1.3	1010005	18	10.25	15	1000	Alu	PU 85
AW 2.3	1010006	25	10.25	15	1000	Alu	PU 85

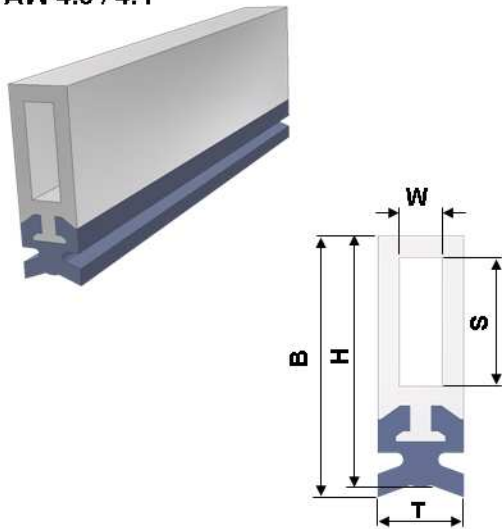
All dimensions in "mm"



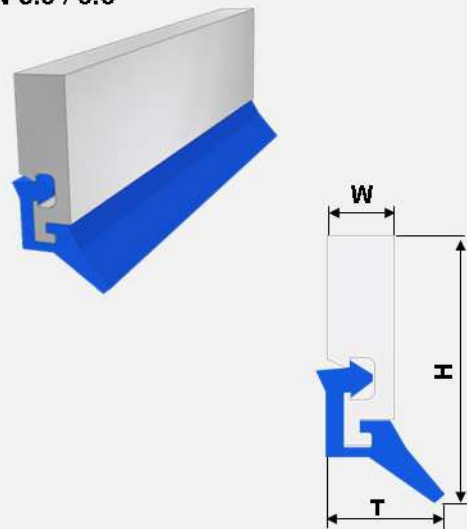
Thodacon Machine Tool Protection

# AW

**AW 4.0 / 4.1**



**AW 5.0 / 6.0**

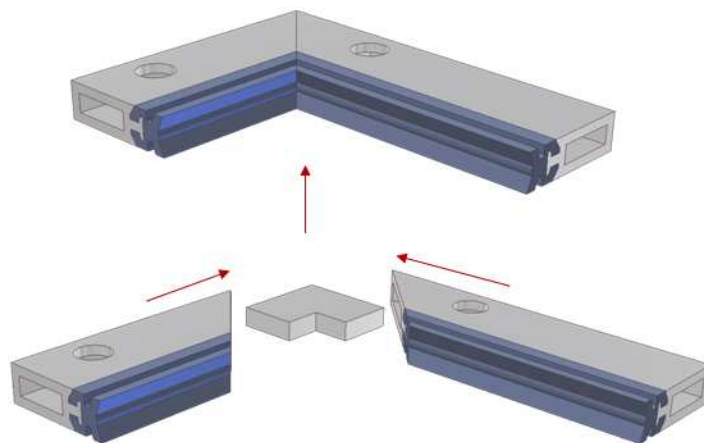


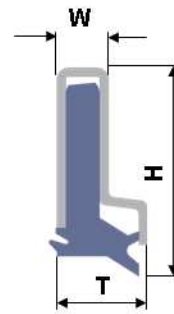
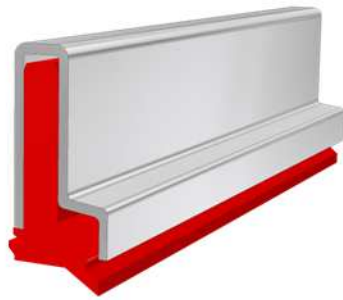
## Technical Information

Type	Order No.	B	H	S	W	T	Length	Casing	Elast.
AW 4.1	1019377	18.2	17.5	9	3	6	1000	Alu	NBR
AW 4.2	1020811	18.2	17.5	9	3	6	1000	Alu	FPM

Type	Order No.	H	W	T	Length	Casing	Elast.
AW 5.0	1018612	18	4.5	7.0	1000	Alu	PU
AW 6.0	1024055	25	4.5	7.0	1000	Alu	PU

All dimensions in "mm"





Stainless Casing

## Technical Information

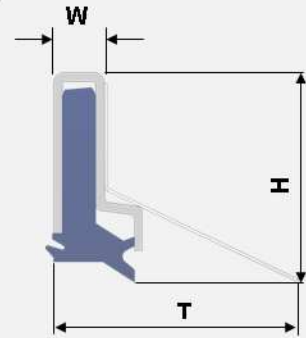
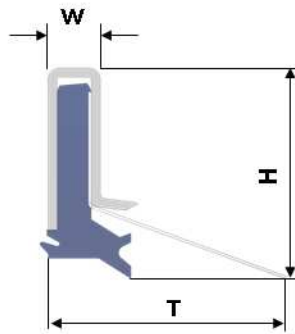
Type	Order No.	H	W	T	Length	Casing	Elast.
SW 0.5	1022433	14	4.6	8.7	1000	Stainless	PU 85
SW 1.0	1005206	18	4.6	8.7	500	Stainless	PU 85
SW 1.1	1005207	18	4.6	8.7	1000	Stainless	PU 85
SW 2.0	1005208	25	4.6	8.7	500	Stainless	PU 85
SW 2.1	1005209	25	4.6	8.7	1000	Stainless	PU 85

- Casing and wiper lip available separately

Type	Order No.	Length	Casing	Elast.
SW 1.2	1000210	1000	Stainless	-
SW 1.3	1006006	2000	Stainless	-
SW 2.2	1005186	1000	Stainless	-
SW 2.3	1006007	2000	Stainless	-
SW 3.0	1000054	Endless	-	PU 85 Black
SW 3.1	1011232	Endless	-	PU 85 Red

All dimensions in "mm"





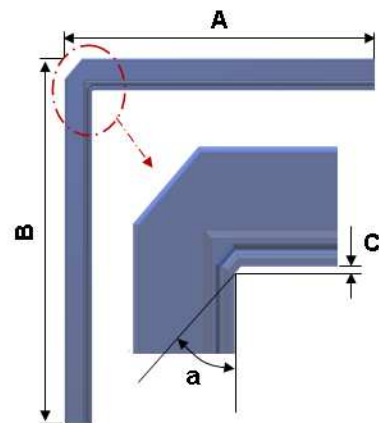
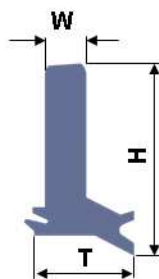
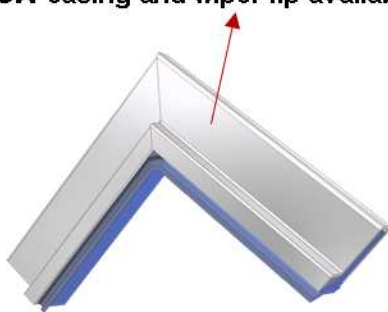
**Technical Information**

- Casing and wiper lip available separately

Type	Order No.	H	W	T	Length	Casing	Elast.
SW 1.4	1010002	18.5	4.6	21	500	Stainless	PU 85
SW 1.5	1010001	18.5	4.85	22	500	Stainless	PU 85
SW 2.4	1010004	25.5	4.6	21	500	Stainless	PU 85
SW 2.5	1010003	25.5	4.85	22	500	Stainless	PU 85

Way Wiper  
SW Series

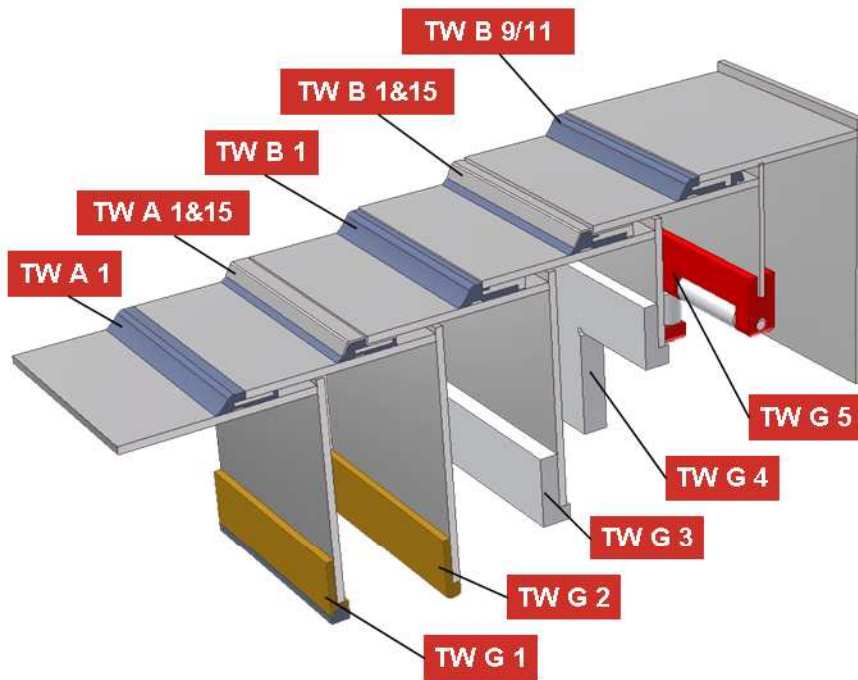
SW casing and wiper lip available separately



- SW Wiper Lip

Type	Order No.	H	W	T	A	B	C	a	Elast.
SW 3.2	1017918	17.2	3	7.3	200	200	1	45°	PU 90 Black

All dimensions in "mm"

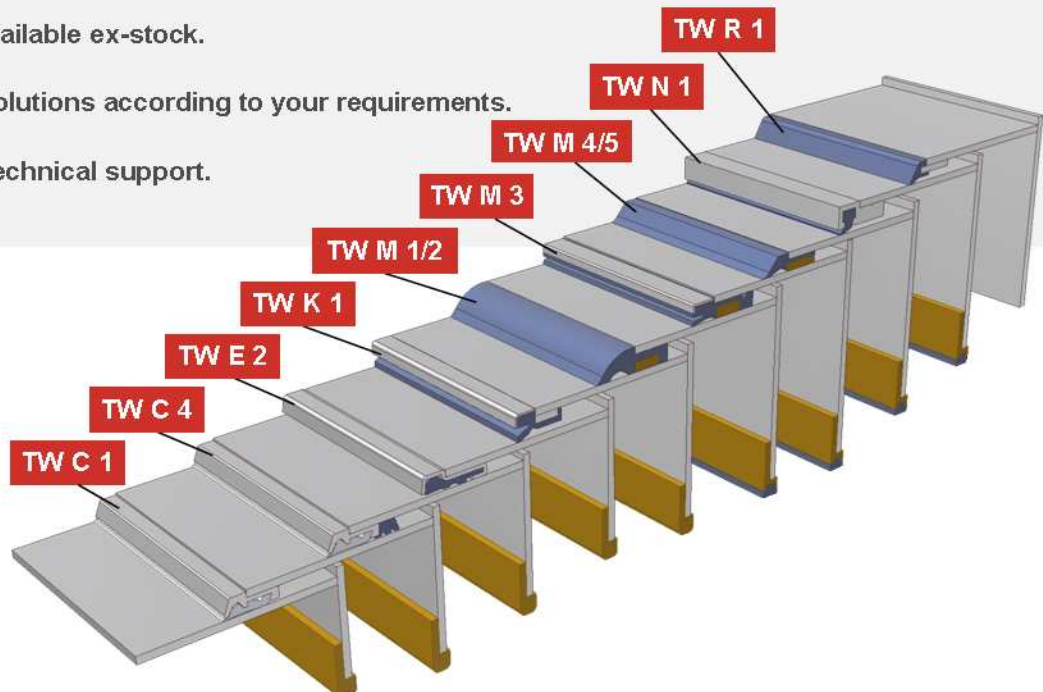


Way wipers for telescopic covers as well as sliding elements to support the covers have to fulfill the hardest requirements. High temperatures (hot chips), highly abrasive and chemical decomposing environment demand the most suitable materials and an attentive fabrication.

All Thodacon components are developed and carried out in commitment to a long durability of your covers.

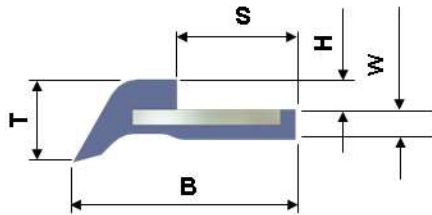
The range of various products match most of existing cover designs.

- Find your suitable standard profile.
- Many types available ex-stock.
- Customised solutions according to your requirements.
- An excellent technical support.





# TW A



TW A 5 / 6



TW A 7 / 8



TW A 15

## Technical Information

Type	Order No.	S	H	B	W	T	Length	Elast.
TW A 1	1000007	8	2	15	2	6	500	NBR
TW A 2	1000086	8	2	15	2	6	500	FPM
TW A 3	1000223	8	2	15	2	6	1000	NBR
TW A 4	1000224	8	2	15	2	6	1000	FPM

### - Telescopic Wipers, Type A, further variations

Type	Order No.	S	H	B	W	T	Length	Elast.	Steel Plate
TW A 5	1000159	8	2	15	2	6	500	NBR	8 x 2
TW A 6	1000225	8	2	15	2	6	500	FPM	8 x 2
TW A 7	1000162	8	2	15	2	6	500	NBR	20 x 2
TW A 8	1000226	8	2	15	2	6	500	FPM	20 x 2

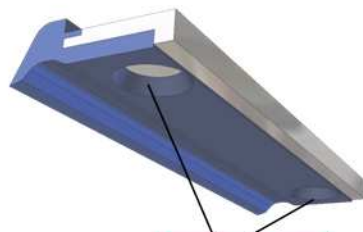
### - Spring steel protection

Type	Order No.	T	Length	Material
TW A 15	1000930	0.5	1000	CrNi

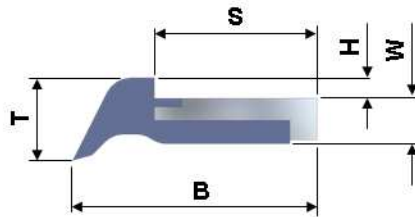
All dimensions in "mm"

TW A and TW B Wipers are mainly used on telescopic way covers. According to any requirements the wipers can be used as regular guide way wipers.

# TW B



Welding Spots



TW B 5 / 6



TW B 7 / 8



TW B 9 / 10



## Technical Information

Type	Order No.	S	H	B	W	T	Length	Elast.
TW B 1	1000008	12	1.5	18	3.3	6	500	NBR
TW B 2	1000227	12	1.5	18	3.3	6	500	FPM
TW B 3	1000228	12	1.5	18	3.3	6	1000	NBR
TW B 4	1000229	12	1.5	18	3.3	6	1000	FPM

### - Telescopic Wipers, Type A, further variations

Type	Order No.	Bumper	S	H	B	W	T	Length	Elast.	Steel Plate
TW B 5	1000164	-	12	1.5	18	3.3	6	500	NBR	12 x 2
TW B 6	1000230	-	12	1.5	18	3.3	6	500	FPM	12 x 2
TW B 7	1000166	-	12	1.5	18	3.3	6	500	NBR	25 x 2
TW B 8	1000231	-	12	1.5	18	3.3	6	500	FPM	25 x 2
TW B 9	1000042	Short	14	1.5	20	3.3	6	500	NBR	-
TW B 10	1000043	Short	14	1.5	20	3.3	6	500	FPM	-

All dimensions in "mm"

# TW B



TW B 11 / 12



TW B 13 / 14



TW B 15

## Technical Information

Type	Order No.	Bumper	S	H	B	W	T	Length	Elast.	Steel Plate
TW B 11	1000044	Long	16	1.5	22	3.3	6	500	NBR	-
TW B 12	1000045	Long	16	1.5	22	3.3	6	500	FPM	-
TW B 13	1000462	-	12	1.5	18	3.3	6	1000	NBR	-
TW B 14	1000409	-	12	1.5	18	3.3	6	1000	FPM	-

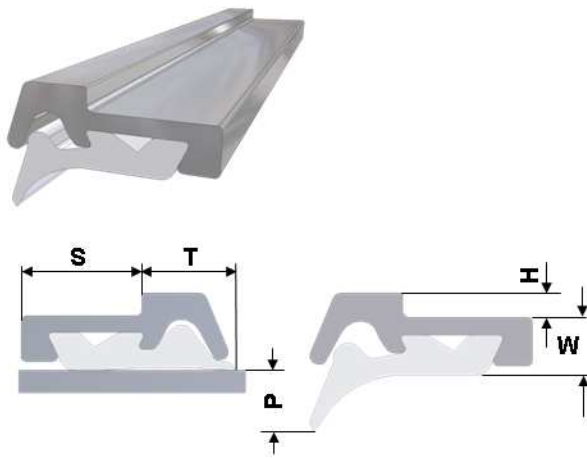
### - Spring steel protection

Type	Order No.	T	Length	Material
TW B 15	1000931	0.5	1000	CrNi

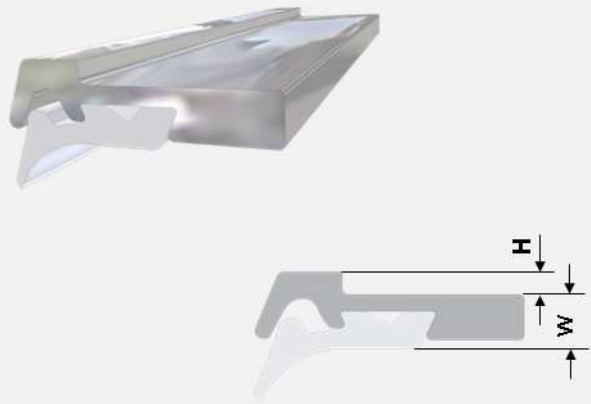
All dimensions in "mm"

# TW C

## TW C 1



## TW C 2



## Technical Information

Type	Order No.	S	H	P	W	T	Length	Bumper	Casing	Lip
TW C 1.0	1000237	8	1.5	2.5	3.5	6	1000	-	Steel	PU 83
TW C 1.1	1000236	8	1.5	2.5	3.5	6	1000	-	Steel	PU 95
TW C 2.0	1002348	12	1.5	2.5	3.5	6	1000	-	Steel	PU 83
TW C 2.1	1002349	12	1.5	2.5	3.5	6	1000	-	Steel	PU 95
TW C 2.2	1002350	12	1.5	2.5	3.5	6	500	-	Steel	PU 83
TW C 2.3	1002351	12	1.5	2.5	3.5	6	500	-	Steel	PU 95
TW C 4.0	1000238	12	1.5	2.5	3.5	6	1000	NBR	Steel	PU 83
TW C 4.1	1000894	12	1.5	2.5	3.5	6	1000	NBR	Steel	PU 95
TW C 5.0	1015819	8	2.0	2.5	3.5	6	1000	-	Steel	PU 83
TW C 5.1	1015820	8	2.0	2.5	3.5	6	1000	-	Steel	PU 95
TW C 6.0	1041725	12	1.5	2.5	4.5	6	1000	PU	Steel	PU

### Thodacon's TW C Wiper beats it all:

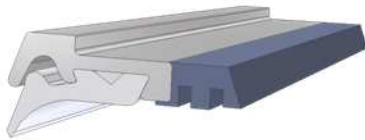
A preload of 2.5 mm while keeping a constant low friction allows to use the wiper even when the telescopic steel plates are spoiled. TW C compensates all in-accuracies in the surface. Also TW C is the first choice for cleaning the aluminium apron covers.

- Wiper lip Type C is much easier to mount and to replace than the existing solutions.
- The steel case offers a better protection to hot chips.
- A higher preload of 2.5 mm makes it possible to compensate unevenness in the surface.
- The chemical resistance of the wiper lip is reassimilated to the higher requirements in the machine tool areas.
- Although the wiper is a completely new Thodacon design, the wiper lip is interchangeable with lips of similar commercial systems.



# TWC

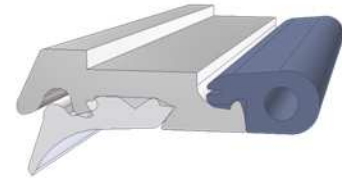
**TW C 4**



**TW C 5**



**TW C 6**



## Technical Information

### - Telescopic Wipers, Type C Casing

Type	Order No.	Bumper	Length	Casing
TW C 1.2	1000239	-	1000	Steel
TW C 1.3	1000240	-	3000	Steel
TW C 2.4	1002352	-	500	Steel
TW C 2.5	1002353	-	1000	Steel
TW C 2.6	1002132	-	3000	Steel
TW C 4.2	1000141	NBR	1000	Steel
TW C 5.2	1015821	-	1000	Steel
TW C 5.3	1013309	-	3000	Steel
TW C 6.2	1041726	-	1000	Steel
TW C 6.3	1020899	-	3000	Steel

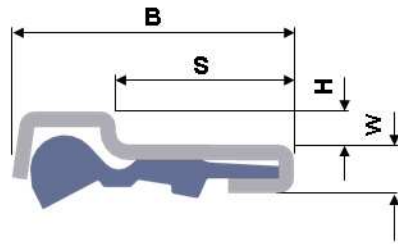
### - Telescopic Wipers, Type C Wiper lip

Type	Order No.	Application	Length	Elast.
TW C 3.1	1000142	Regular using	Endless	PU 83 White
TW C 3.2	1000106	Regular using	Endless	PU 83 Black
TW C 3.3	1001346	Regular using	Endless	PU 83 Red
TW C 3.4	1000241	Dry using	Endless	PU 95 Black
TW C 6.1	1036232	Regular using	Endless	PU 83 Black

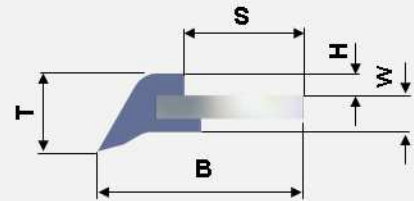
Way Wiper  
TW Series

# TW E/R

## TW E



## TW R



### Technical Information for TW E

Type	Order No.	S	H	B	W	Length	Casing	Elast.
TW E 2.0	1000243	12	2.2	19	3.2	1000	Steel	PU 83 Black
TW E 2.1	1000247	12	2.2	19	3.2	3000	Steel	PU 83 Black

- Casing and wiper lip available separately

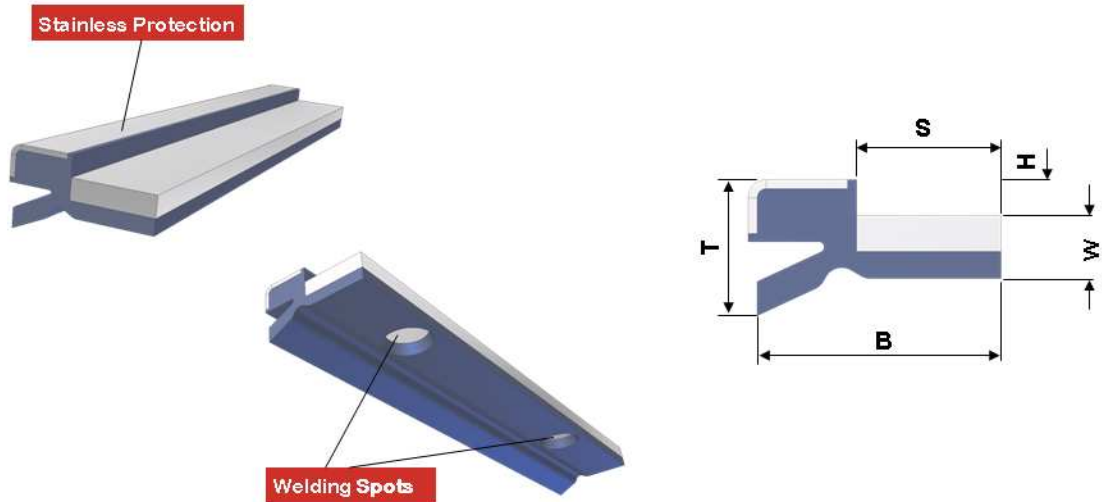
Type	Order No.	H	B	W	Length	Casing	Elast.
TW E 2.2	1000031	-	12	19	1000	Steel	-
TW E 2.3	1002042	-	12	19	3000	Steel	-
TW E 2.4	1000019	Regular using	-	-	Endless	-	PU 83
TW E 2.5	1003640	Dry using	-	-	Endless	-	PU 95

### Technical Information for TW R

Type	Order No.	S	H	B	W	T	Length	Elast.
TW R 1	1000942	9.3	1.7	16	2.8	6	560	NBR
TW R 2	1001114	9.3	1.7	16	2.8	6	560	FPM
TW R 3	1001021	7	1.4	13	2.1	3.8	560	NBR
TW R 4	1001115	7	1.4	13	2.1	3.8	560	FPM
TW R 5	1001056	11.2	2.4	20	3.2	7	560	NBR
TW R 6	1001116	11.2	2.4	20	3.2	7	560	FPM



# TW K



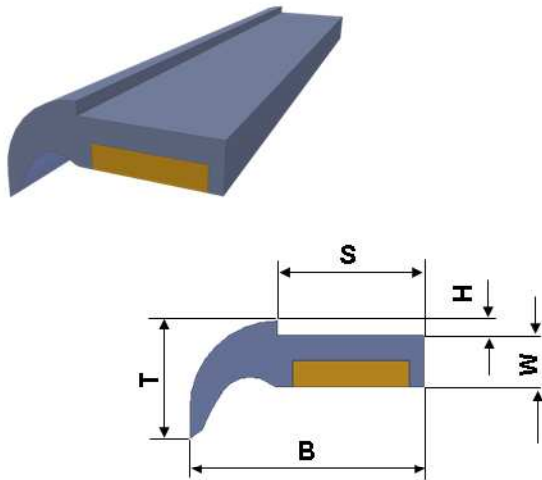
## Technical Information

- Suitable for both regular and dry using

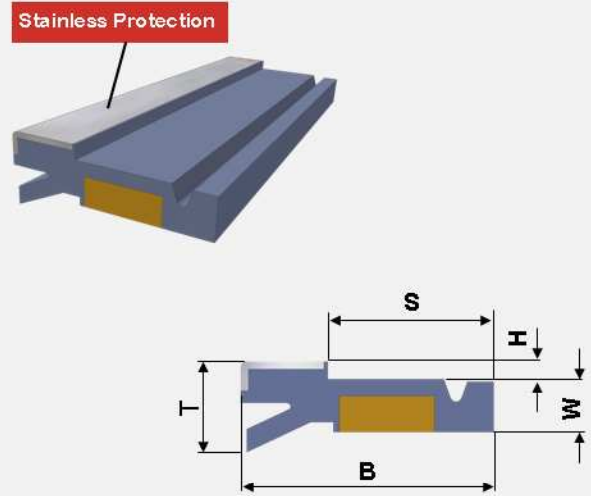
Type	Order No.	S	H	B	W	T	Length	Casing	Elast.	Application
TW K 1	1012551	8	2	14	3.5	7.6	1000	Stainless 8 x 2	NBR 83	Regular using
TW K 2	1012552	8	2	14	3.5	7.6	1000		FPM 83	
TW K 3	1012062	8	2	14	3.5	7.6	1000		NBR 90	Dry using
TW K 4	1012553	8	2	14	3.5	7.6	1000		FPM 90	
TW K 5	1012554	8	2	14	3.5	7.6	1000		NBR 83	Regular using
TW K 6	1012555	8	2	14	3.5	7.6	1000	FPM 83		
TW K 7	1012556	8	2	14	3.5	7.6	1000	Steel 8 x 2	NBR 90	Dry using
TW K 8	1012557	8	2	14	3.5	7.6	1000		FPM 90	
TW K 9	1020457	10	2	17	4.5	9.5	1000		NBR 83	Regular using
TW K 10	1020819	10	2	17	4.5	9.5	1000	FPM 83		
TW K 11	1020820	10	2	17	4.5	9.5	1000	Steel	NBR 83	
TW K 12	1020821	10	2	17	4.5	9.5	1000	10 x 2.5	FPM 83	Dry using
TW K 13	1021625	10	2	17	4.5	9.5	1000	Stainless	NBR 90	
TW K 14	1021626	10	2	17	4.5	9.5	1000	10 x 2.5	FPM 90	
TW K 15	1022058	10	2	17	4.5	9.5	1000	Steel	NBR 90	Dry using
TW K 16	1021627	10	2	17	4.5	9.5	1000	10 x 2.5	FPM 90	

# TW M

## TW M 1 / 2



## TW M 3



### Technical Information

Type	Order No.	S	H	B	W	T	Length	Casing	Elast.
TW M 1.0	1000251	10	1	16	4	8	1000	Brass 8 x 2	NBR
TW M 1.1	1000351	10	1	16	4	8	1000	Brass 8 x 2	FPM
TW M 2.0	1000252	12	2	21	5	9	1000	Brass 8 x 3	NBR
TW M 2.1	1000352	12	2	21	5	9	1000	Brass 8 x 3	FPM

- Casing and wiper lip available separately

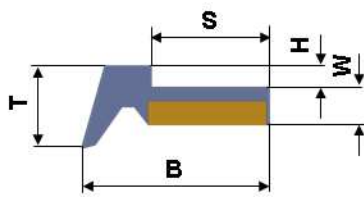
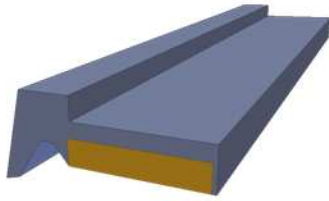
Type	Order No.	Issue	S	H	B	W	T	Length	Casing	Elast.
TW M 1.2	1000048	Casing	-	-	-	-	-	1000	Brass 8 x 2	-
TW M 1.3	1000046	Lip	10	1	16	4	8	Endless	-	NBR
TW M 1.4	1000353	Lip	10	1	16	4	8	1000	-	NBR
TW M 1.5	1000354	Lip	10	1	16	4	8	1000	-	FPM
TW M 2.2	1000049	Casing	-	-	-	-	-	1000	Brass 8 x 3	-
TW M 2.3	1000355	Lip	12	2	21	5	9	Endless	-	NBR
TW M 2.4	1000047	Lip	12	2	21	5	9	1000	-	NBR
TW M 2.5	1000356	Lip	12	2	21	5	9	1000	-	FPM

All dimensions in "mm"

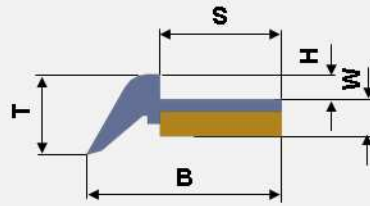
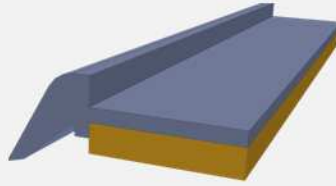


# TW M

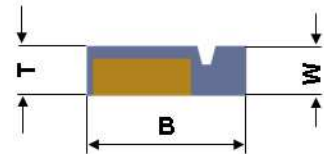
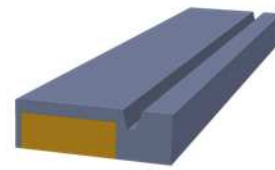
**TW M 4**



**TW M 5**



**TW M 6**



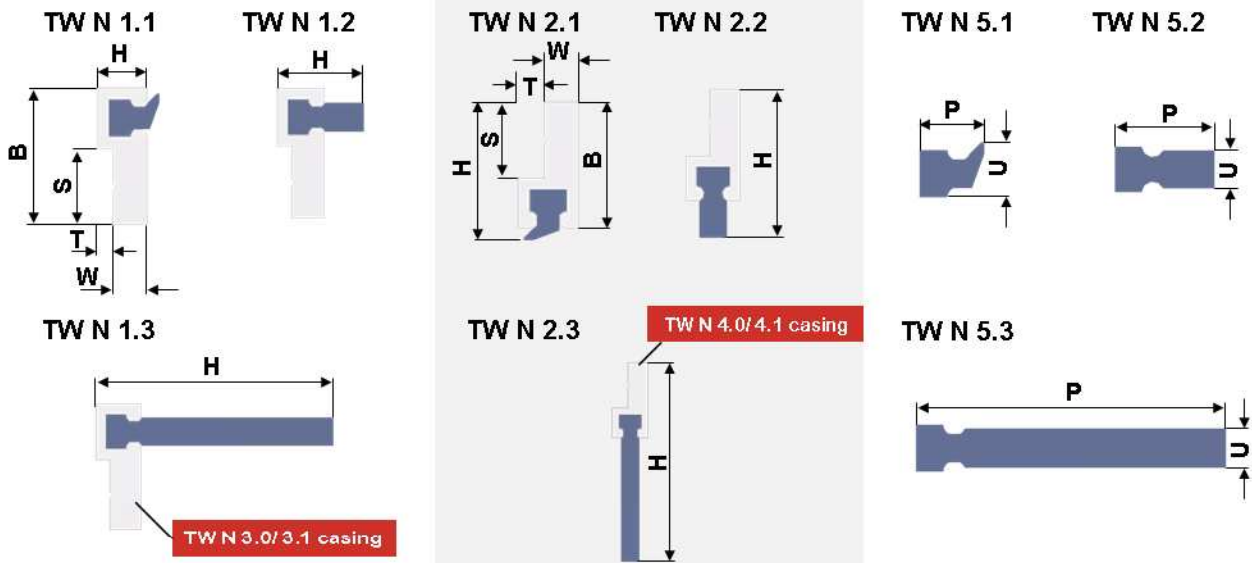
## Technical Information

Type	Order No.	Protection	S	H	B	W	T	Length	Casing	Elast.
TW M 3.0	1000939	Stainless	14	1.5	21	4.3	7.5	1000	Brass 8 x 3	NBR
TW M 3.1	1001047	Stainless	14	1.5	21	4.3	7.5	1000	Brass 8 x 3	FPM
TW M 3.2	1030343	Stainless	14	1.5	21	4.3	7.5	1500	Brass 8 x 3	NBR
TW M 3.3	1041634	Stainless	14	1.5	21	4.3	7.5	1500	Brass 8 x 3	FPM
TW M 4.0	1001101	-	10	1.8	16	3.2	7	560	Brass 10x 2	NBR
TW M 4.1	1001102	-	10	1.8	16	3.2	7	560	Brass 10x 2	FPM
TW M 4.2	1002108	-	10	1.8	16	3.2	7	1000	Brass 10x 2	NBR
TW M 4.3	1002129	-	10	1.8	16	3.2	7	1000	Brass 10x 2	FPM
TW M 5.0	1002062	-	10	2	16	3	6.5	1000	Brass 10x 2	NBR
TW M 5.1	1002072	-	10	2	16	3	6.5	1000	Brass 10x 2	FPM
TW M 6.0	1003293	-	-	-	13	4	4	1000	Brass 8 x 3	NBR
TW M 6.1	1003294	-	-	-	13	4	4	1000	Brass 8 x 3	FPM

### - Moulded version (brass & elastomer bounded)

Type	Order No.	S	H	B	W	T	Length	Casing	Elast.
TW M 1.6	1011216	10	1	16	4	8	1000	Brass 8 x 2	NBR
TW M 1.7	1023176	10	1	16	4	8	1000	Brass 8 x 2	FPM
TW M 2.6	1011217	12	2	21	5	9	1000	Brass 8 x 3	NBR
TW M 2.7	1023177	12	2	21	5	9	1000	Brass 8 x 3	FPM

# TW N



## Technical Information

Type	Order No.	B	S	W	T	H	Length	Casing	Elast.
TW N 1.1	1007883	18.0	10	4.5	2	8.5	1000	Alu	NBR
TW N 1.2	1012574	18.0	10	4.5	2	12	1000	Alu	NBR
TW N 1.3	1012575	18.0	10	4.5	2	34	1000	Alu	NBR
TW N 2.1	1009050	16.5	10	4.5	3.5	18.5	1000	Alu	NBR
TW N 2.2	1011095	16.5	10	4.5	3.5	22	1000	Alu	NBR
TW N 2.3	1011096	16.5	10	4.5	3.5	44	1000	Alu	NBR

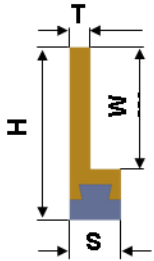
- Casing and wiper lip available separately

Type	Order No.	P	U	Length	Casing	Elast.
TW N 3.0	1011093	-	-	3000	Alu	-
TW N 3.1	1011094	-	-	1000	Alu	-
TW N 4.0	1011097	-	-	3000	Alu	-
TW N 4.1	1011098	-	-	1000	Alu	-
TW N 5.1	1011099	7.0	5.6	1000	-	NBR
TW N 5.2	1012561	10.5	4.0	1000	-	NBR
TW N 5.3	1012562	32.5	4.0	1000	-	NBR

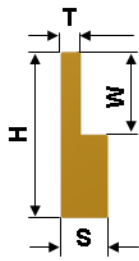
All dimensions in "mm"

# TWG

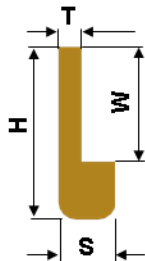
**TW G 1.0**



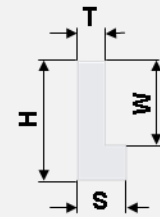
**TW G 1.1**



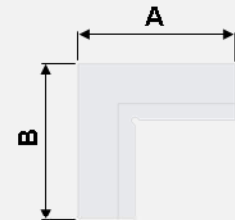
**TW G 2**



**TW G 3**



**TW G 4**



## Technical Information

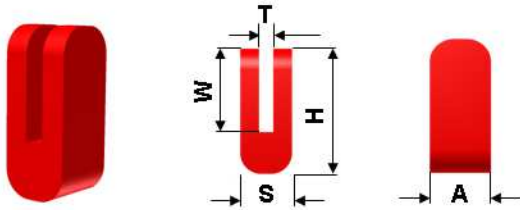
- Casing made of brass with or without vulconised slide rubber

Type	Order No.	S	H	W	T	Length	Material	Slide Rubber
TW G 1.0	1000050	5	17	12	2	500	Brass	NBR
TW G 1.1	1020936	4.5	16	8	1.9	1000	Brass	-
TW G 1.2	1031161	5	25	10	2	1000	Brass	-
TW G 2.0	1000053	4	17	13	2	1000	Brass	-
TW G 2.1	1004322	5	17	12	2	1000	Brass	-
TW G 2.2	1021311	5	17	14	2	1000	Brass	-
TW G 2.3	1021312	5	17	13	2	1000	Brass	-
TW G 2.4	1021313	5	17	11	2	1000	Brass	-
TW G 2.5	1031162	5	25	10	2	1000	Steel	-

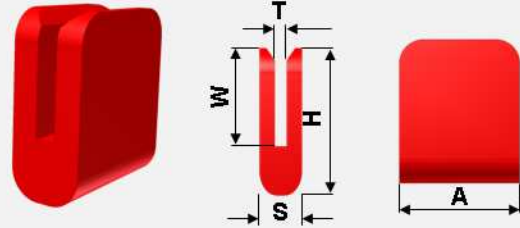
Type	Order No.	S	H	W	T	A	B	Material
TW G 3	1000253	8	15	19	5	/	/	HDPE
TW G 4	1000254	8	15	19	5	60	60	HDPE

# TWG

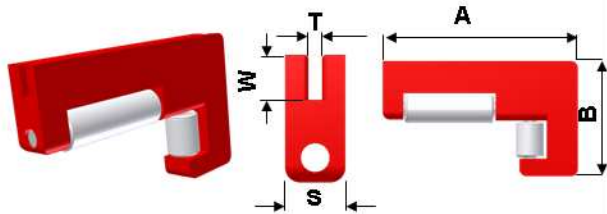
## TWG 5.0



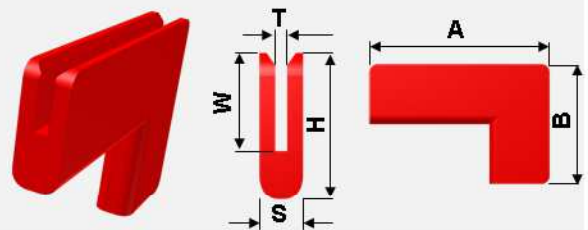
## TWG 6.0 / 6.1



## TWG 5.1 / 5.2



## TWG 6.2 / 6.3 / 6.4

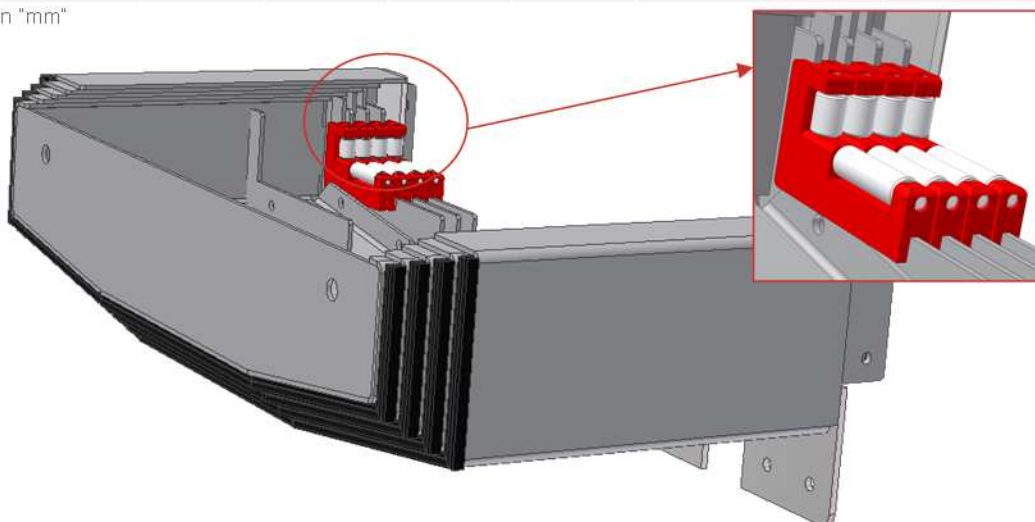


### Technical Information

- Suitable for both regular and dry using

Type	Order No.	T	S	W	H	A	B	Material	Color
TWG 5.0	1012178	1.4	5.0	8.0	12	5.0	/	HDPE	Red
TWG 5.1	1011526	1.9	8.0	6.0	/	57	33.5	HDPE	Red
TWG 5.2	1017424	2.9	8.0	6.0	/	57	33.5	HDPE	Red
TWG 6.0	1012177	1.4	5.0	8.0	12	10	/	HDPE	Red
TWG 6.1	1012176	1.4	5.0	8.0	12	20	/	HDPE	Red
TWG 6.2	1012125	1.4	5.0	8.0	12	42	27	HDPE	Red
TWG 6.3	1012124	1.9	6.0	8.0	15	45	30	HDPE	Red
TWG 6.4	1017616	2.9	7.0	8.0	15	45	30	HDPE	Red

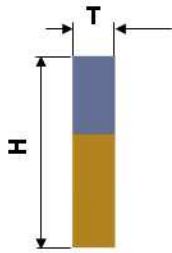
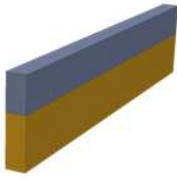
All dimensions in "mm"



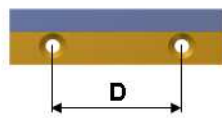
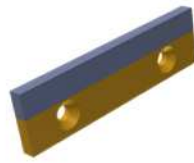
Thodacon Machine Tool Protection

# TWG

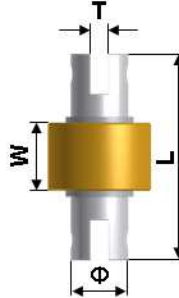
**TWG 7.0**



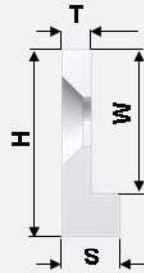
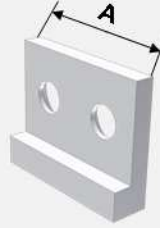
**TWG 7.1/7.2**



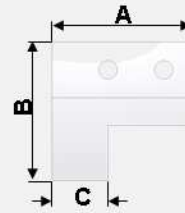
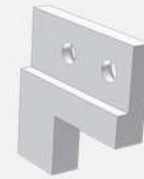
**TWG 9.0**



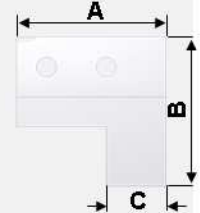
**TWG 8.0**



**TWG 8.1**



**TWG 8.2**



## Technical Information

Type	Order No.	T	H	D	Holes	Length	Material	Slide Rubber
TWG 7.0	1001936	3	13.5	/	/	500	Brass	NBR
TWG 7.1	1001939	3	13.5	30	3	50	Brass	NBR
TWG 7.2	1001940	3	13.5	30	5	140	Brass	NBR

Type	Order No.	S	W	H	T	A	B	C	Material
TWG 8.0	1001536	4	10	13	2	16	/	/	HDPE
TWG 8.1	1001534	5	10	15	3	25	25	10	HDPE
TWG 8.2	1001535	5	10	15	3	25	25	10	HDPE

Type	Order No.	L	W	Φ	T	Material
TWG 9.0	1021452	36	12	18	3.2	Brass

All dimensions in "mm"

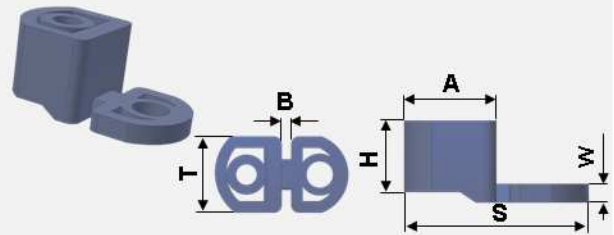


# TW H

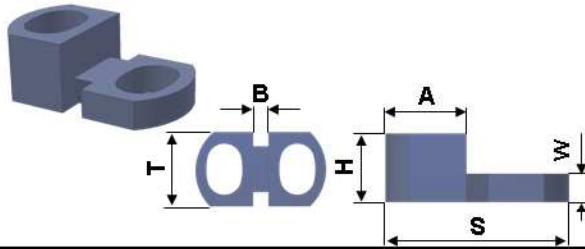
TW H 1



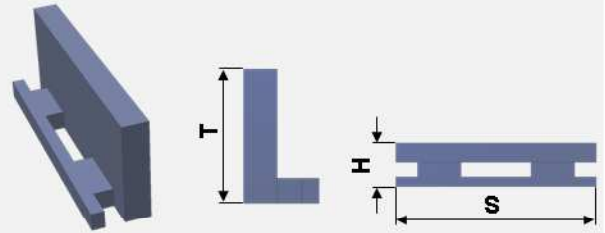
TW H 3



TW H 2



TW H 4

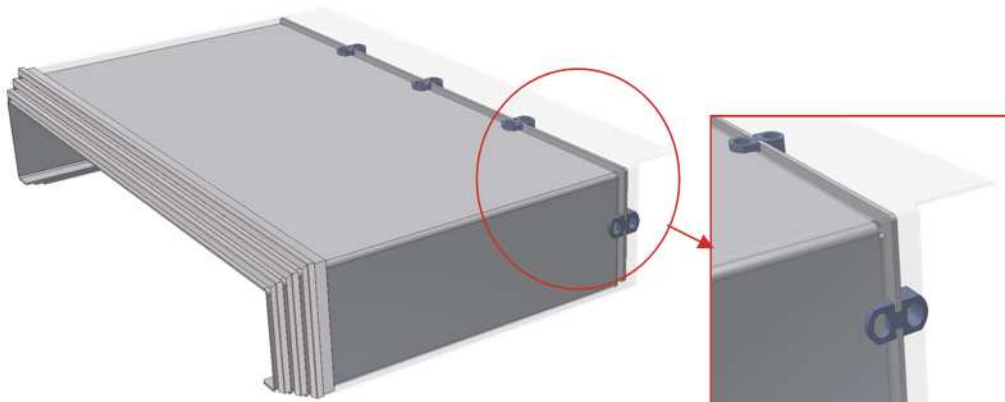


## Technical Information

Type	Order No.	ØD	S	Material	Hardness Shore A
TW H 1.0	1002817	12	15	NBR	75

Type	Order No.	T	S	W	H	A	B	Material	Hardness Shore A
TW H 2.0	1002767	13	22.7	3.5	8.5	10	2.7	NBR	75
TW H 2.1	1020460	15	26.9	4.7	8.5	12	2.9	NBR	83
TW H 2.3	1031394	13	22.7	2.3	7.0	10	2.7	NBR	83
TW H 3.0	1013119	20	35	3.5	13.5	17.5	2.5	NBR	83
TW H 3.1	1022922	26	39.9	4.7	13.5	22	2.9	NBR	83
TW H 3.2	1025817	15	18	3.5	6.0	7.7	2.5	NBR	83
TW H 4.0	1015082	16	41.5	/	9.0	/	/	NBR	83

All dimensions in "mm"



Thodacon Machine Tool Protection

# Thodacon Products Ranges



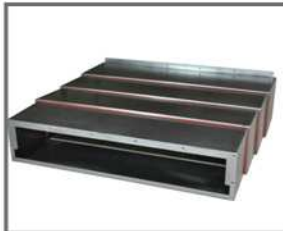
## Way Wipers

- MW Moulded Wiper
- SW Steelcase Wiper
- AW Aluminium Wiper
- TW Telescopic Wiper



## Bellow Covers

- Protect machine from shavings and chips generation.



## Steel Covers

- High temperature resistant.
- Excellent resistant to heavy chip loads.



## Roller Covers

- Small space requirement.
- Long durability.



## Apron Covers

- Light but stable.
- Hard anodized surface.
- Waterproofed for high speed using.



## Moulded Bellows

- Protect lead screws, precision shafts, various round shafts and regular-shape parts.
- Various mounting types.

**thodacon**<sup>®</sup>  
www.thodacon.com

**thodacon**<sup>®</sup>  
Werkzeugmaschinenenschutz GmbH

Albert-Schalper-Str. 25  
83059 Kolbermoor, Germany  
Tel: +49 (0)8031-22205-71  
Email: sales@thodacon.cn

**thodacon**<sup>®</sup>  
Machine Tool Protection Co., Ltd.

Baojian Industrial Zone, building 1, Luoshe  
Wuxi 214154, China  
Tel: +86 510 8329 1518  
Email: sales@thodacon.cn

- ISO 9001:2008 -  
Certified Company